



CSE:IRV
OTCQX:IRVRF
FSE: 1IR

February 2026

Irving Resources Inc. (“Irving”) is a Canadian-based mineral exploration company with a focus on gold in Japan. Irving resulted from completion of a plan of arrangement involving Irving, Gold Canyon Resources Inc. and First Mining Finance Corp. and commenced trading on the CSE under the symbol “IRV” in December 2015. In 2016, Irving’s wholly-owned subsidiary, Irving Resources Japan GK (“Irving Japan”) was established.

Japan

In Japan, Irving is focused on identifying high-silica, high-grade epithermal Au-Ag veins that could potentially be suitable for use as smelter flux in the many operating base metal smelters throughout the country. Recovery of precious metals occurs during the smelting and refining process.

CORPORATE STRUCTURE

CSE: IRV; OTCQX: IRVRF

Share Price: CAD\$0.425

Issued & Outstanding 99,132,218

Fully Diluted 118,600,418

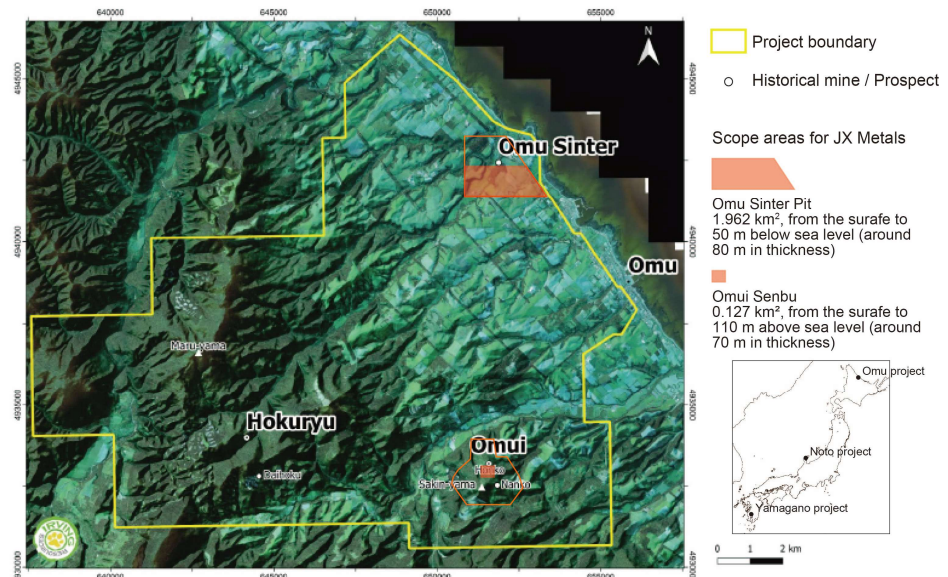


Figure 1: Omu project area map

Board & Management

Akiko Levinson, Director and President

Dr. Quinton Hennigh, Director and Technical Advisor

Douglas Buchanan, K.C., Director

Kevin Box, Director

Mackenzie Clugston, Director

Queenie Kuang, Chief Financial Officer & Secretary

Takashi Yoshie, Executor, Irving Japan

Shuichi Miyatake, VP Exploration, Irving Japan & JV Project Manager

Kazunori Yoshimura, VP General Affairs, Irving Japan

Yuki Kobayashi, Chief Financial Officer, Irving Japan

Corporate Head Office

Irving Resources Inc.

Suite 404 - 999 Canada Place

Vancouver, BC

Canada, V6C 3E2

Email: Info@IRVresources.com

Tel: [604-682-3234](tel:604-682-3234)

Toll Free: [1-888-242-3234](tel:1-888-242-3234)



CSE: **IRV**
OTCQX: **IRVRF**
FSE: **1IR**

Japan continued

In 2016, Irving Japan secured the 2.98 sq km Omui mining license on the island of Hokkaido, Japan. To augment its land position, Irving Japan also secured 2.18 sq km of surface rights and filed 52 prospecting licenses covering an additional 173.98 sq km of prospective ground encompassing the entirety of the Omu volcanic graben.

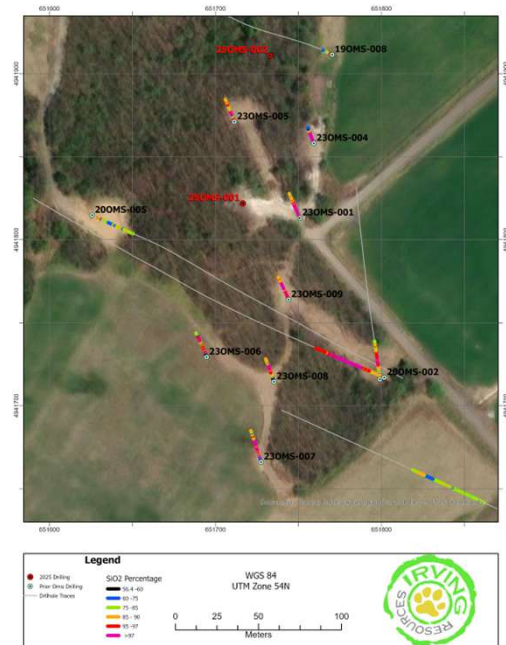
Irving Japan commenced diamond drilling in March 2019 at Omu project targeting Omu Sinter and Omui Mine. Remarkably, nearly all holes encountered one or multiple high-grade Au-Ag veins; the company has drilled over 23,000 meters at Omu project to date.

In November 2024, Irving Japan entered into an agreement with JX Advanced Metals Corporation (“JX Metals”) whereby JX Metals may earn an interest in certain of Irving’s properties in Omu, focusing on precious metal-bearing silica deposits. Irving and JX Metals are currently laying out plans for the next steps to advance Omu Sinter Pit and Omuisenbu toward becoming a new important source of smelter flux in Japan.

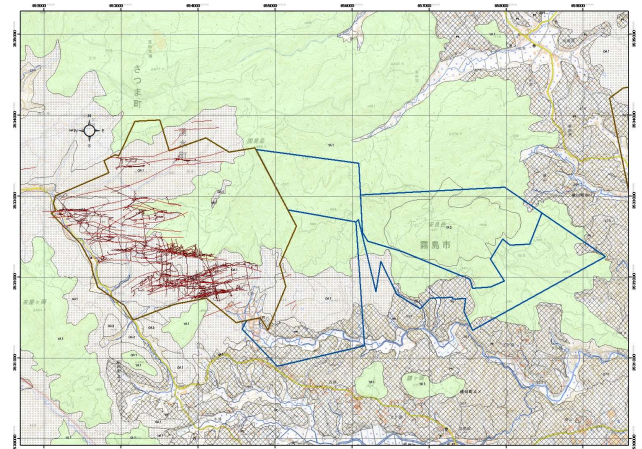
In June 2020, Irving announced acquisition of the historic Yamagano Mining License (Shimadzu Mining Right) and adjoining East Yamagano prospecting licenses (collectively, “Yamagano”) located in Kyushu, Japan. Yamagano is a famous historic high-grade mine located 11 kms south of the world class Hishikari mine operated by Sumitomo Metal Mining Co. Ltd. Yamagano has seen no modern exploration. Irving believes there is excellent potential to discover more high-grade veins at Yamagano Project.

In October 2024, Irving Japan finalized its agreement with Newmont and Sumitomo Corporation with respect to the formation of a joint venture over the Yamagano and Noto project. Initial JV interests are Newmont at 60%, Irving at 27.5% and Sumitomo at 12.5%. The JV has completed 6 drill holes in East Yamagano and preparations are now underway to look to potentially commence drilling on the Yamagano, Shimadzu Mining Right, in 2026.

Cautionary Statement and Forward Looking Statement Disclaimer: Certain information included in this discussion may constitute forward-looking statements. These statements involve known and unknown risks, uncertainties and other factors that may cause actual results or events to differ materially from those anticipated in such forward-looking statements. Such statements are based on a number of assumptions which may prove to be incorrect, including that there is excellent potential to discover more high-grade veins at Yamagano and the adjoining lands controlled by Irving Japan. Investors should not place undue reliance on forward-looking statements as the plans, intentions or expectations upon which they are based might not occur. Investors and others who base themselves on Irving’s forward-looking statements should carefully consider the above factors as well as the ability of obtaining sufficient financial support.



Plan view of Omu Sinter showing drill traces with silica contents.



Location of Shimadzu Mining Right, Irving's Exploration Right, known auriferous veins, old tunnels and lithologies of Pre/Syn/Post gold mineralization.